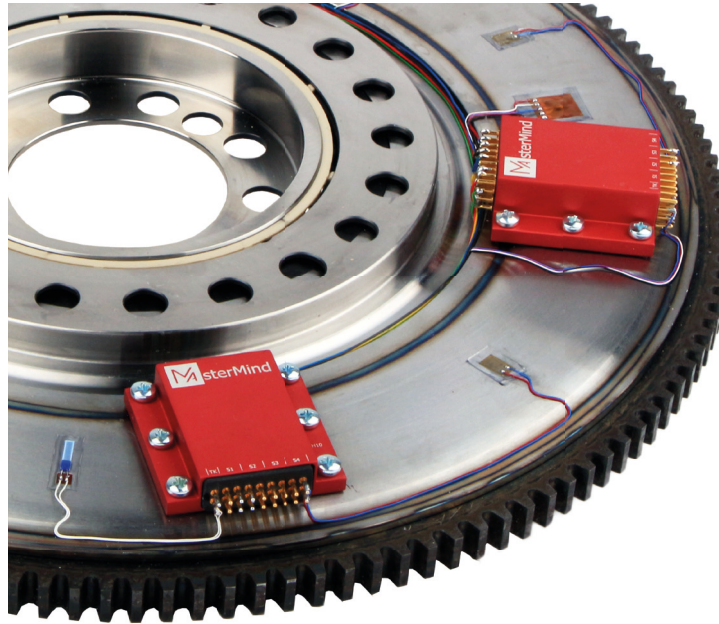


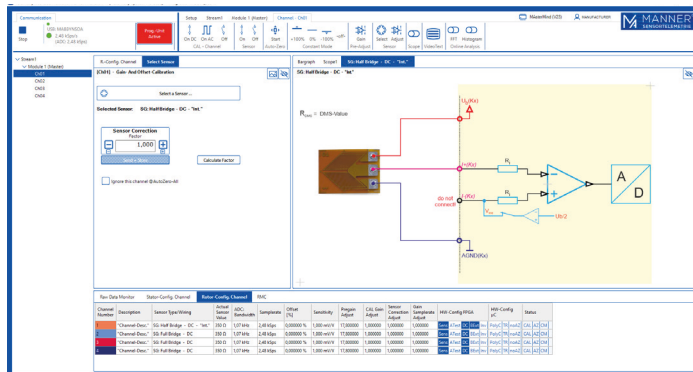
Brand New Software Generation

- ✓ remote adjustable system bandwidth
- ✓ sensor calibration interface
- ✓ remote power control
- ✓ tools for the system setup such as:
 - Scope
 - Bargraph
 - xy-diagram
- ✓ tools for analyse:
 - live FFT analysis
 - waterfall chart
- ✓ health & usage Monitoring tool

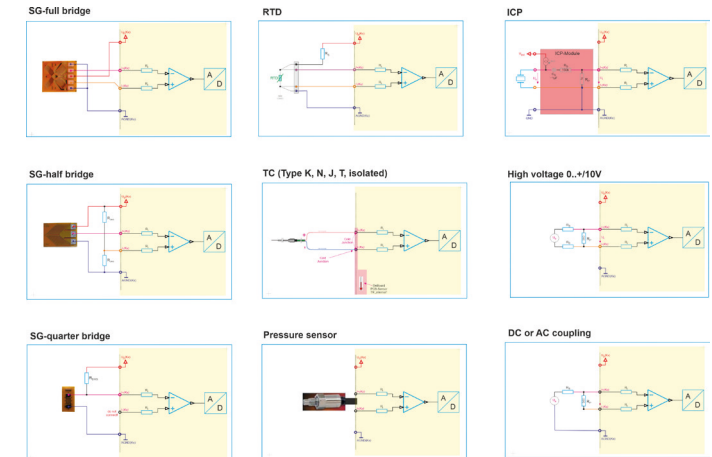


MAsterMind amplifier from 4- to 128-channels

- ✓ what you desire is what you get!
Just click it!
- ✓ distance between modules up to 500mm
- ✓ large & complex machines can be addressed and the amplifiers positioned close to the sensor amplifiers



Typical connectable sensors



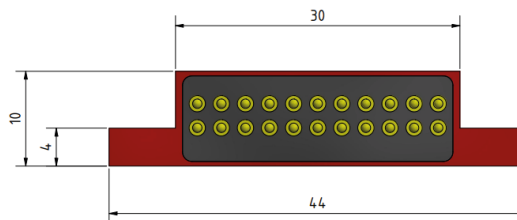
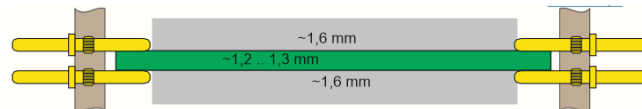
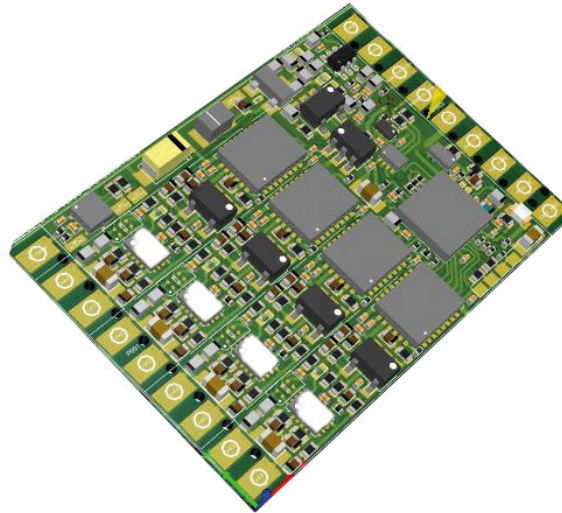
- ✓ compact 4-channel modules
- ✓ available as standard IN STOCK!
- ✓ power supply module for full flexibility
- ✓ custom packing of 4-channel modules available
- ✓ short lead times
- ✓ flexible interconnection of up to 32 modules
- ✓ up to 128-channels



Since the measuring tasks of measurement engineers are diverse, especially in the rotating area, MANNER developed the genius of amplifiers.

- ✓ be flexible
- ✓ be fully equipped
- ✓ auto zero
- ✓ shunt kal and test function
- ✓ easy setup via configuration tool
- ✓ be prepared for each measurement task that is thrown in your direction

Mechanical dimensions:



MASTERMIND

A revolution is here -
The genius of amplifiers!

- ✓ for near-field telemetry systems
- ✓ 24 bit resolution
- ✓ interface to all common sensors

