

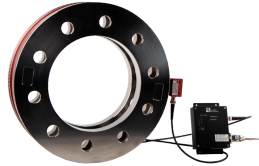
Solutions for all sizes



XtreMA HP
(0.05...10 kN·m)



XtreMAX
(10...1000 kN·m)



Customized
Solutions



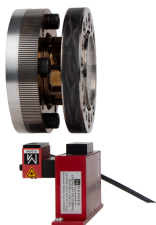
Highspeed Flange
65.000 rpm



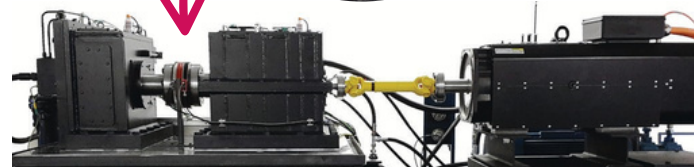
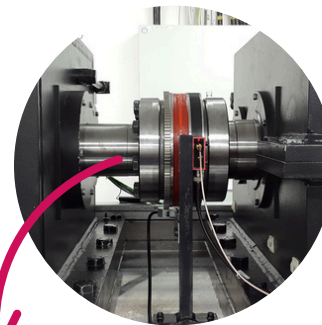
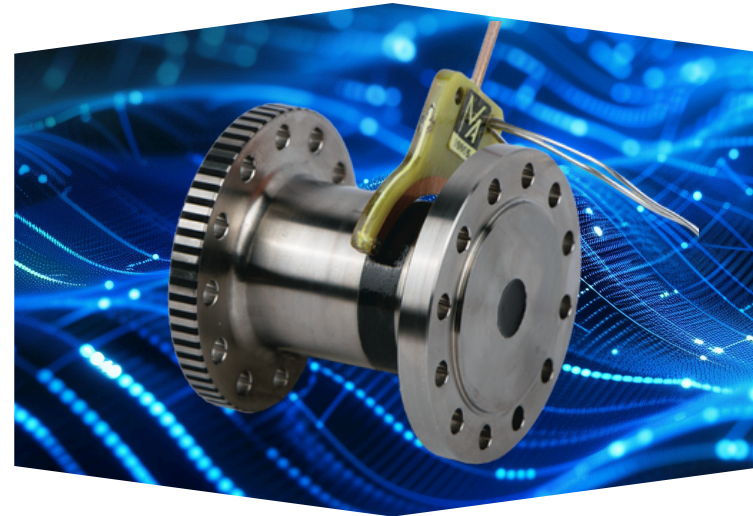
MW_S
(1...500 N·m)



Two
range



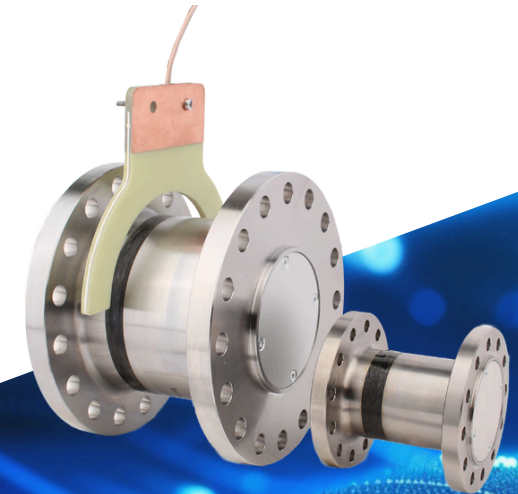
Option: Change e.g. via app or simultaneous
- 2 Channel solution



MANNER Sensortelemetrie GmbH, Eschenwasen 20, 78549 Spaichingen
Tel. Nr.: +49 7424 93290 Email: info@sensortelemetrie.de

Highspeed Torque Flange

0.5 kN·m to 20 kN·m



MANNER advanced design for higher
precision and overload resistance

- Rated speeds up to 65.000min⁻¹
- Accuracy class 0.05 (up to 0.02 optional)
- Short design
- Customized mechanical interface
- DAKS calibrations available
- Wide temperature range: -40°C up to 160°C
- Up to 10 kHz (-3dB) bandwidth

What we do better as others

Flexible and Proven!

Go Dual, go Digital!

Our Design

- 400% limit torque of the nominal torque with no harm to the flange
- 800% breaking torque of the nominal torque
- High bending tolerance

Options for Highest Accuracy

- Zero drift compensation -40°C to 160°C
- E-Modul compensation -40°C to 160°C
- Speed compensation
- Compensation of parasitic forces

Made for harsh environment

- Oil mist, grease
- Water IP67; Saltwater
- ATEX

- The inductive technology allows flexible stator configurations depending on your needs:
 - Radial/Nominal distance is 10 mm (up to 20 mm optional)
 - Axial tolerance between pickup and flange is ± 2 mm (up to ± 20 mm optional)
- High rotor to stator distance prevents collisions, vibrations and damage through inaccurate installation
- MANNERS proven technology ensures high transmission quality, even with inaccurate installation
- Fully digitalized measurement (no interference on the communication path)

- The stator unit is freely configurable with the classic analogue signal output (voltage, current, frequency)
- The following digital outputs are available via EtherCAT, CAN, Ethernet, WLAN
- Interface for health monitoring
- Integrated Pick-Up version is available as well as a set apart solution for cabinet mounted evaluation units

