

3DM-GX3[®]-15 OEM and 3DM-GX3[®]-25 OEM

Mounting and Connector Information



 **LORD MicroStrain[®]**
SENSING SYSTEMS

©2013 LORD Corporation
MicroStrain[®] Sensing Systems
459 Hurricane Lane
Suite 102
Williston, VT 05495
United States of America
Phone: 802-862-6629
Fax: 802-863-4093

www.microstrain.com
support@microstrain.com

REVISED: January 31, 2013

Table of Contents

Mounting and Connector Information.....	1
Connector.....	4
Connector Pinout	4
FTSH Host Footprint	4
FTSH Connector Numbering.....	5
Module Mounting information.....	5

Connector

The connector used on the [3DM-GX3[®]-15 OEM](#) and [3DM-GX3[®]-25 OEM](#) modules is a Samtec fine pitch (0.050") 5 x 2 (10 pin) keyed header connector. Cables are IDC ribbon cables. Connectors and cables in any length can be ordered directly from Samtec. Refer to the Samtec [website](#) for specific order information.

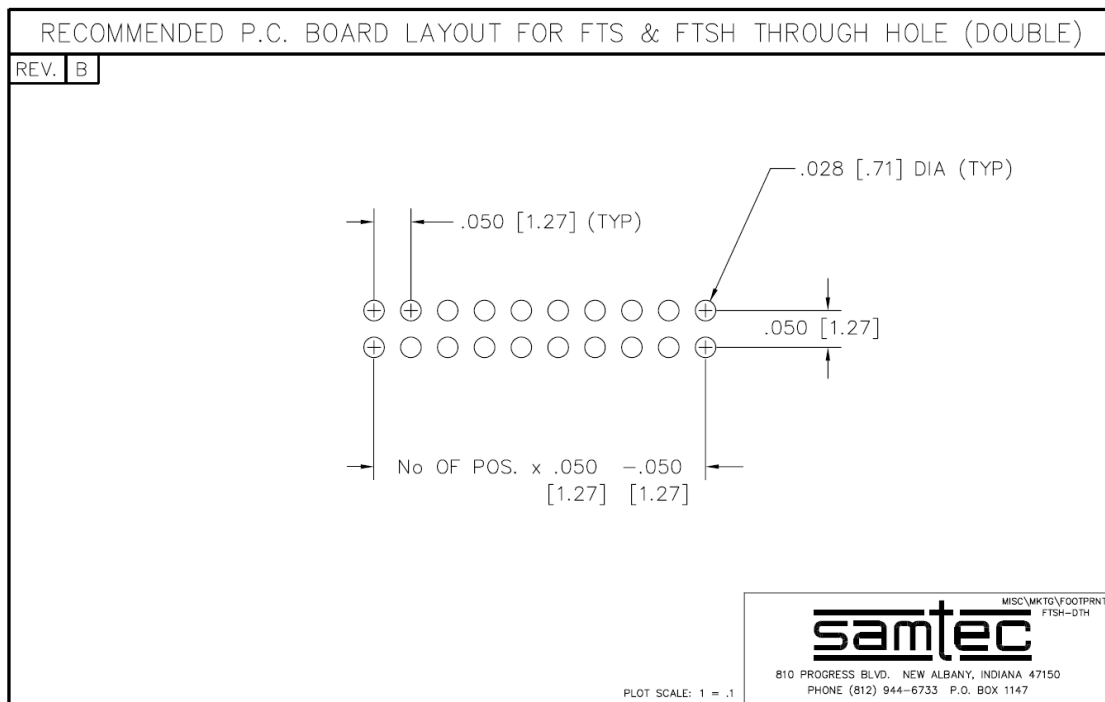
Connector: Samtec [FTSH-105-01-F-D-K](#).
Mates with: Samtec [FFSD-05-D-xx.xx-01-N](#) (where xx.xx is length of cable in inches)

Connector Pinout

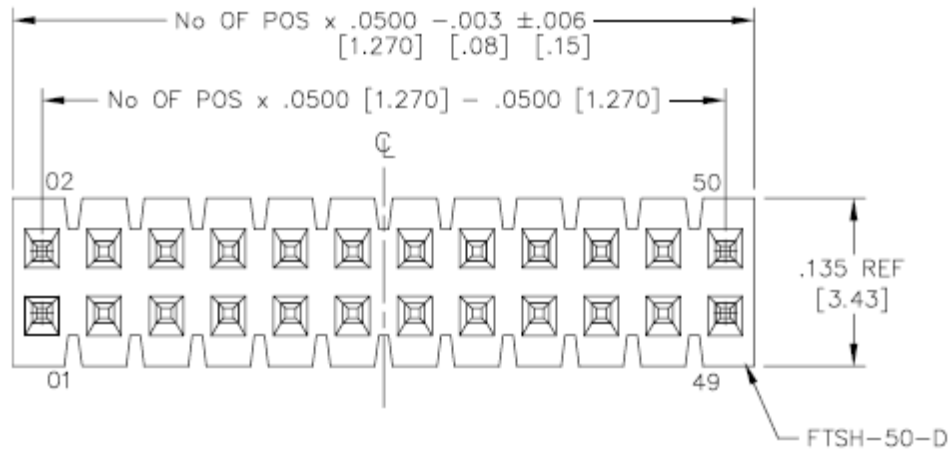
Pin	Name	Type	Description
1	USBDM	BiDir	USB D- Signal
2	USBDP	BiDir	USB D+ Signal
3	VBUS	Power	Power – Minimum 3.1 volts, Maximum 5.5 volts DC
4	UARTRX	Input	LVTTTL (5V Tolerant) Serial UART receive (connect to host Transmit)
5	UARTTX	Output	LVTTTL (5V Tolerant) Serial UART transmit (connect to host Receive)
6	NC		Not connected
7	GPIO1	I/O	General purpose I/O
8	GND	Ground	Power and signal ground
9	GPIO2	I/O	General purpose I/O
10	nENABLE	Input	Module enable. LVTTTL low enables. LVTTTL high disables

FTSH Host Footprint

This information is provided to assist layout of an interface connector on the host printed circuit board.

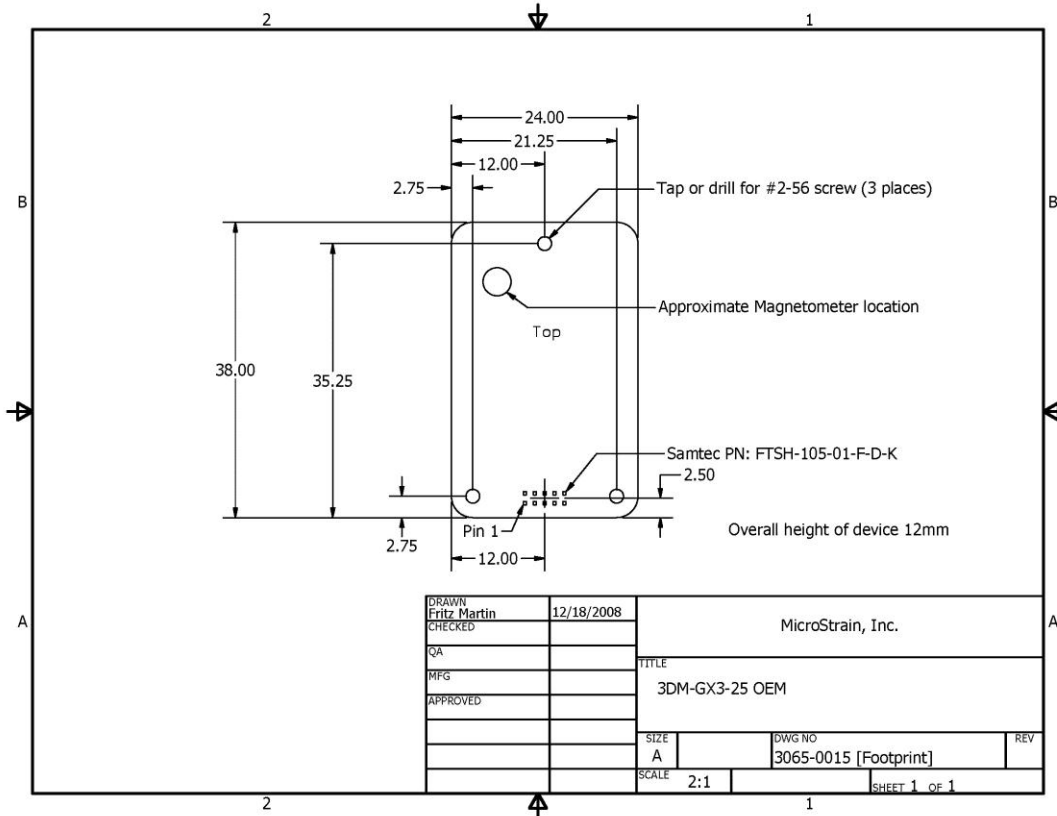


FTSH Connector Numbering



Module Mounting information

The overall dimensions of the module will not exceed 24mm x 38mm x 12mm +/-0.20. Three mounting holes are required. These should be drilled and tapped for #2-56 screws or drilled for #2-56 screws and nuts. Brass, aluminum, nylon, or 300 series stainless should be used for all mounting hardware to avoid magnetic field interference. Magnetometer is located in the upper left corner – opposite the connector end.



DRAWN Eritz Martin	12/18/2008	MicroStrain, Inc.	
CHECKED		TITLE	
QA		3DM-GX3-25 OEM	
MFG		SIZE	DWG NO
APPROVED		A	3065-0015 [Footprint]
		SCALE	2:1
			SHEET 1 OF 1