

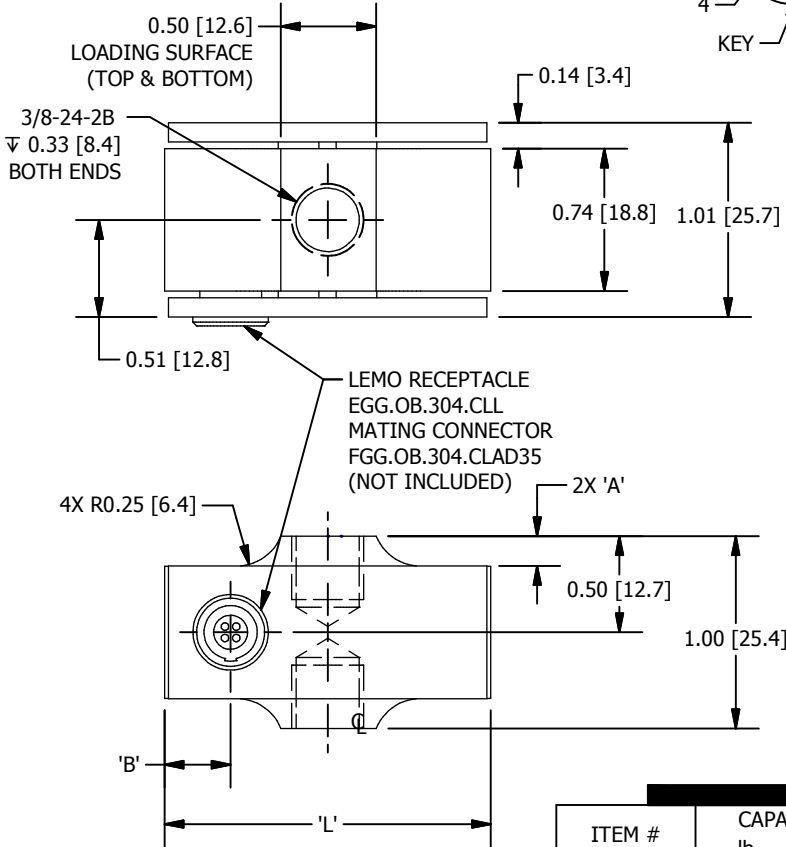
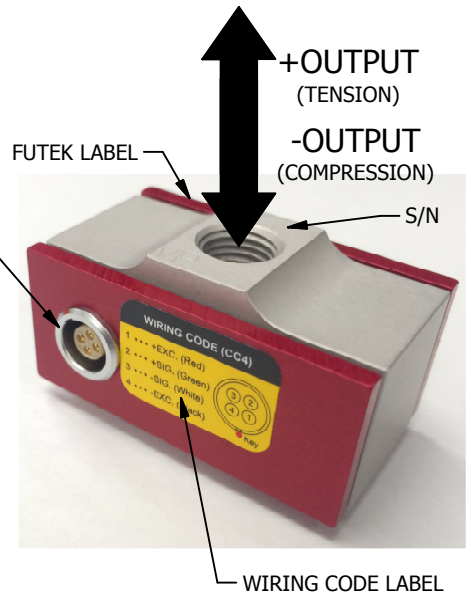
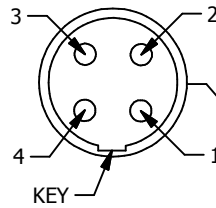
FUTEK MODEL LRF350 LOW PROFILE TENSION AND COMPRESSION LOAD CELL

DRAWING NUMBER: FI1070-D

INCH [mm] | R.O. = Rated Output

WIRING CODE (CC4)

+ Excitation	- Excitation	+ Signal	- Signal
RED PIN 1	BLACK PIN 4	GREEN PIN 2	WHITE PIN 3



LEMO RECEPTACLE
EGG.OB.304.CLL
MATING CONNECTOR
FGG.OB.304.CLAD35
(NOT INCLUDED)

ITEM #	CAPACITY		A	B	L	MATERIAL
	lb	N				
FSH00084	200	890	0.14 [3.6]	0.36 [9.1]	1.74 [44.2]	ALUMINUM
FSH00085	300	1334	0.12 [3.0]	0.39 [9.9]		2 oz [57 g]
FSH00086	500	2224	0.16 [4.1]	0.34 [8.6]	1.70 [43.2]	17-4 ph S.S.
FSH00088	1000	4450	0.11 [2.8]	0.39 [9.9]	1.74 [44.2]	5oz [142 g]

SPECIFICATIONS:

RATED OUTPUT	2 mV/V nom.
SAFE OVERLOAD	150 % of R.O.
ZERO BALANCE	±1% of R.O.
EXCITATION (VDC OR VAC)	18 MAX
BRIDGE RESISTANCE	350 Ω nom.
NONLINEARITY	±0.1% of R.O.
HYSTERESIS	±0.1% of R.O.
NONREPEATABILITY	±0.05% of R.O.
CREEP	±0.05% of R.O.
TEMP. SHIFT ZERO	±0.005% of R.O./°F (±0.01 of R.O./°C)
TEMP. SHIFT SPAN	±0.005% of LOAD/°F (±0.01 of LOAD/°C)
COMPENSATED TEMP.	60 to 160 °F (16 to 71 °C)
OPERATING TEMP	-60 to 200 °F (-51 to 93 °C)
MATERIAL (FLEXURE)	SEE CHART
MATERIAL (COVER)	Aluminum, Red Anodized
DEFLECTION	0.002 [0.05] nom.
CONNECTOR:	LEMO 4 Pin Receptacle (EGG.OB.304.CLL)
ACCESSORIES AND RELATED INSTRUMENTS AVAILABLE	
IP Rating	IP40
CALIBRATION (STD)	5 pt. TENSION; 60.4 KΩ SHUNT CAL. VALUE
CALIBRATION (AVAILABLE)	COMPRESSION
CALIBRATION TEST EXCITATION	10 VDC

FUTEK
ADVANCED SENSOR TECHNOLOGY, INC.

This drawing is submitted solely for the information and exclusive use of the original addressee. It is not to be divulged in whole or in part, by any firm or individual without written permission from FUTEK

10 THOMAS
IRVINE, CA 92618 USA
+1 (949) 465-0900

INTERNET:
<http://www.futek.com>
SHEET 1 OF 1